

AC-LT02A-000

Laptrigger transmitter 16 channel

Function

- This laptrigger transmitter is based on an infrared link with a code to suppress the effect of other light sources like sun or other lap trigger systems.
- In interaction with the Laptrigger receiver (=SD-LR02x-000) this laptrigger system allows an exact laptime measurement.
- Section time measurement for comparison of different vehicle setups is also available if several transmitters are used.



▽ Note:

- The transmitter should be mounted to a position where a good alignment to the receiver is guaranteed.
- A code change is only accepted after power off/on.

Technical specifications

Electrical characteristics

Supply voltage.....	8-18 V
Current consumption@12V.....	typ. 200 mA
Adjustable channel codes.....	16

Working range

min (typical)...	1 m
max (typical)..	20 m

Condition for use

- Same height between receiver and transmitter
- Visibility connection between receiver and transmitter
- Avoid direct exposure to sunlight

Accessories (Part numbers)

Receiver: Art.No.: SD-LR02x-000

Documentation reference

- 💡 Art.No.: AC-DOC_Laptime_STD_e-000
- Support→Download→2D manuals→Hardware manuals
- The 2D Laptime System (finding on 2D CD / HP)

Mechanical characteristics

Dimensions.....	90x40x25 mm
Weight.....	190 g
Housing material.....	aluminium

Vibration resistance

Shock.....	40 G
during a time period of...	10 ms
Vibration tested at.....	12 G
with a test frequency of..	1000 Hz

Environmental data

Ambient operating temperature.	-25 to +70 °C
--------------------------------	---------------

Cable

type.....	PUR
wire cross-section.....	2 x AWG20
length.....	1200 mm

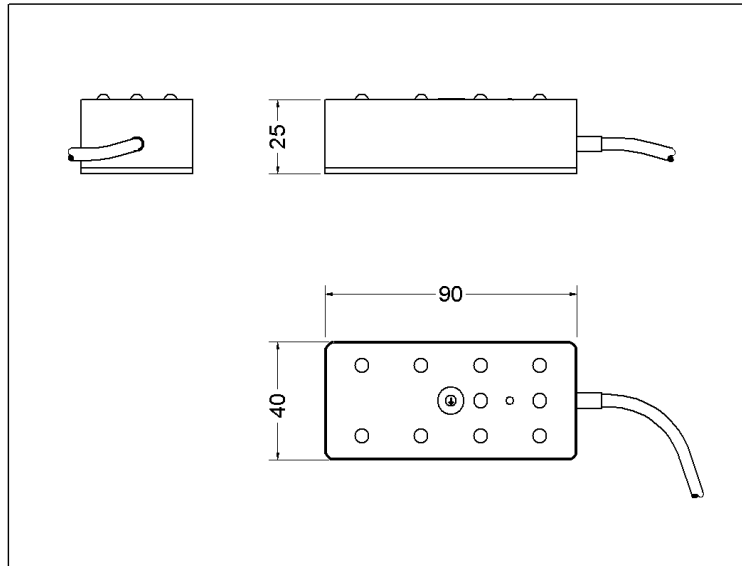
Ordering information

Art.No.:..... AC-LT02A-000

AC-LT02A-000

Laptrigger transmitter 16 channel

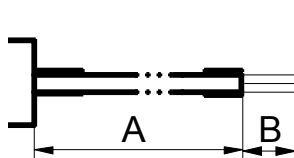
Dimensions



System Installation advice

- Install the transmitter (AC-LT02A-000) on the side of the track with an auxiliary power supply (e.g. use a standard motorcycle battery for the power).
- Verify that the red LED is blinking (=transmitter is working).
- Pay attention that the maximum distance between transmitter and receiver (vehicle) is 20m.
- The vehicle must come to within receiving distance with line of sight. Position the transmitter 15m away from other transmitters.
- **Note:** A code change is only accepted after power off/on.

Connector layout



Sensor with open wires

Name	Color	Remark
GND	Black	open wires
+12V	Red	

Cable: PUR-cable 2 x 0.56 mm²
 A = 1200 mm (shielding)
 B = 30mm – (tinned)