

SD-LR02x-000

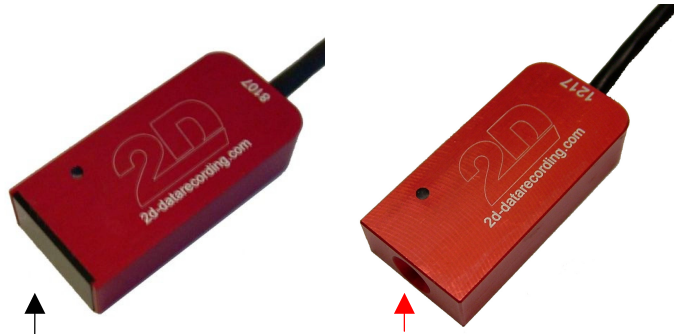
Laptrigger Receiver 16 channel

Function

- The 2D lap laptrigger system is based on an infrared link with a code to suppress the effect of other light sources like sun or other lap trigger systems.
- The receiver should be mounted to a position where a good alignment to the transmitter is guaranteed.

Note:

▽ There is a automatic dead time of 500ms after active pulse to avoid double trigger.



Version SD-LR02A-000
with integrated filter disc

avoid direct sunlight to the lens !

Version SD-LR02C-000 (fixed code)
without integrated filter disc

Technical specifications

Code setting

The code for laptrigger can be changed with the rotary switch from 0 to E



(Housing back side)

A code change (receiver and transmitter) is only accepted after power off / on

Remark

Laptrigger Transmitter: Art.No.: AC-LT02x-000

→ Product group [Accessories]

Electrical characteristics

Power supply.....	5-12 V
Pulse timing active.....	20 ms
dead time.....	500 ms
Output level active.....	0 V
not active.....	5 V
Pulse offset.....	no offset
Adjustable channel codes....	
SD-LR02A-000...	16
SD-LR02C-000...	fixed

Environmental data

Ambient operating range.....	-25 to +70 °C
------------------------------	---------------

Mechanical characteristics

Housing material.....	aluminium
Weight (with cable).....	43 g
Dimensions.....	42 x 20 x 10 mm ³
Cable	
type.....	Raychem EPD
wire cross section..	3 x AWG 24
length.....	1200 mm

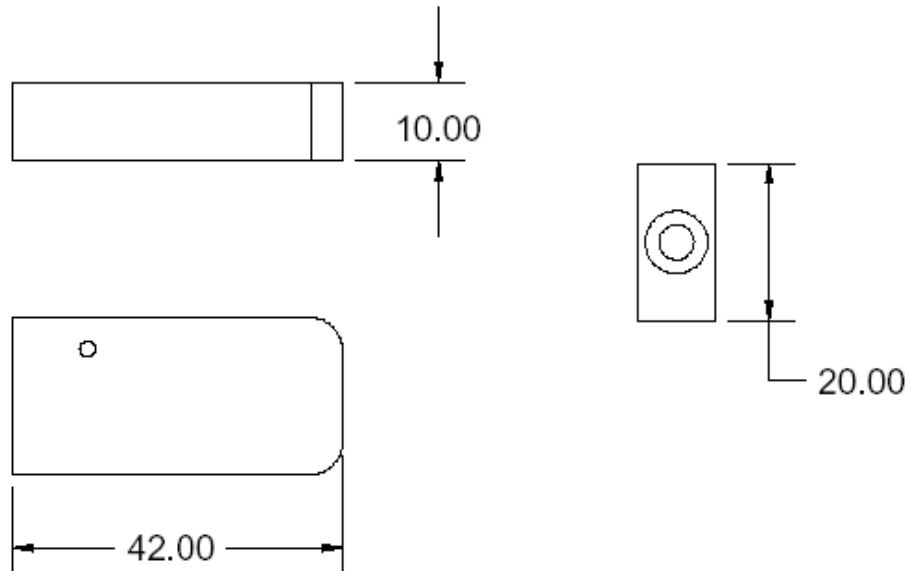
Ordering information

Art.No.:.....	SD-LR02A-000
or.....	SD-LR02C-000

SD-LR02x-000

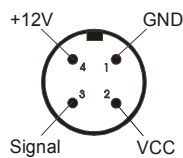
Laptrigger Receiver 16 channel

Dimensions



Connector layout

LAP connector



719 4-pin / male (backside)

LAP connector (Binder 4-pin / male)

Pin	Name	Color
1	GND	black
2	n.c.	-
3	LAP	white
4	+12V	red

Order code

Possible channel codes:	
16 adjustable channel codes.....	A
Fixed code.....	C

Type: SD-LR02 or - 000

