

SA-ACxxxST3-000
Static accelerometer basic

Key Features:

- 3 axis sensing
- Possible full-scale range of: ± 50 G, ± 100 G, ± 200 G
- High force event detection

Technical specifications
Electrical characteristics

Supply voltage	V	12
Output voltage	V	0-5
Measurement range	G	± 50 , ± 100 , ± 200
Filter frequency (opt.)	HZ	225 (1000)

Error of linearity	% FS	<1
Shock resistance acc element	G	10000
Sensitivity @ $X_{out}/Y_{out}/Z_{out}$	mV/G	25
Zero G voltage	V	2.5

Mechanical characteristics

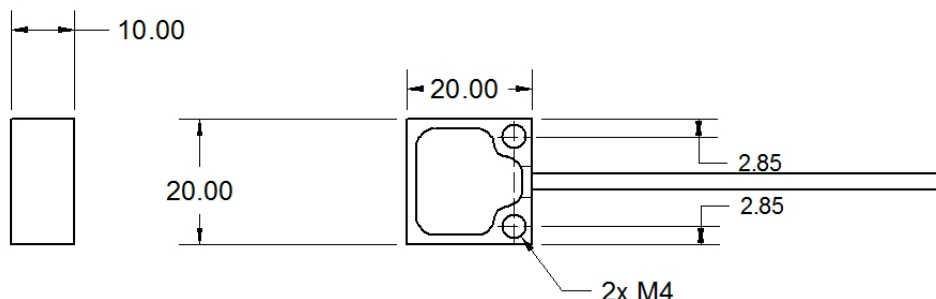
Housing material	Aluminum
Dimensions	mm ³ 20x20x10,5
Weight	g 42
Cable	
Length	mm 1200
Type	Raychem EPD
Wire cross section	5xAWG26
Connector type	Binder 712, 8PM

Environmental data

Ambient operating range	°C	-25 to +85
Humidity	%	5 to 95

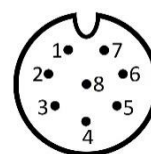
Ordering information

Art.No. SA-ACxxxST3-000

SA-ACxxxST3-000
Static accelerometer basic
Dimensions

Connector layout
Connector type

Binder 712, 8PM

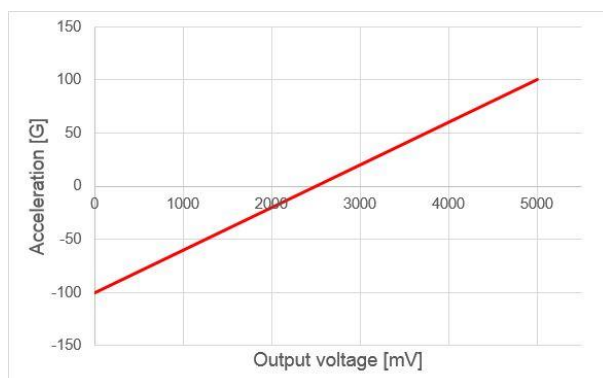
Pin	Name	Description	Color
1	n.c.	Not connected	
2	AGND	Analog ground	black
3	n.c.	Not connected	
4	+12 V	12 V power supply	red
5	X _{out}	X axis signal	white
6	Y _{out}	Y axis signal	green
7	Z _{out}	Z axis signal	yellow
8	n.c.	Not connected	



front view

Formula

	Multiplier		Offset
Acceleration [G]	= 2*xxx/65535	* Digits	- 32767
xxx= range			



For a more accurate formula please refer to the instructions “How to calibrate the analog input channels of the 3-axis module”.